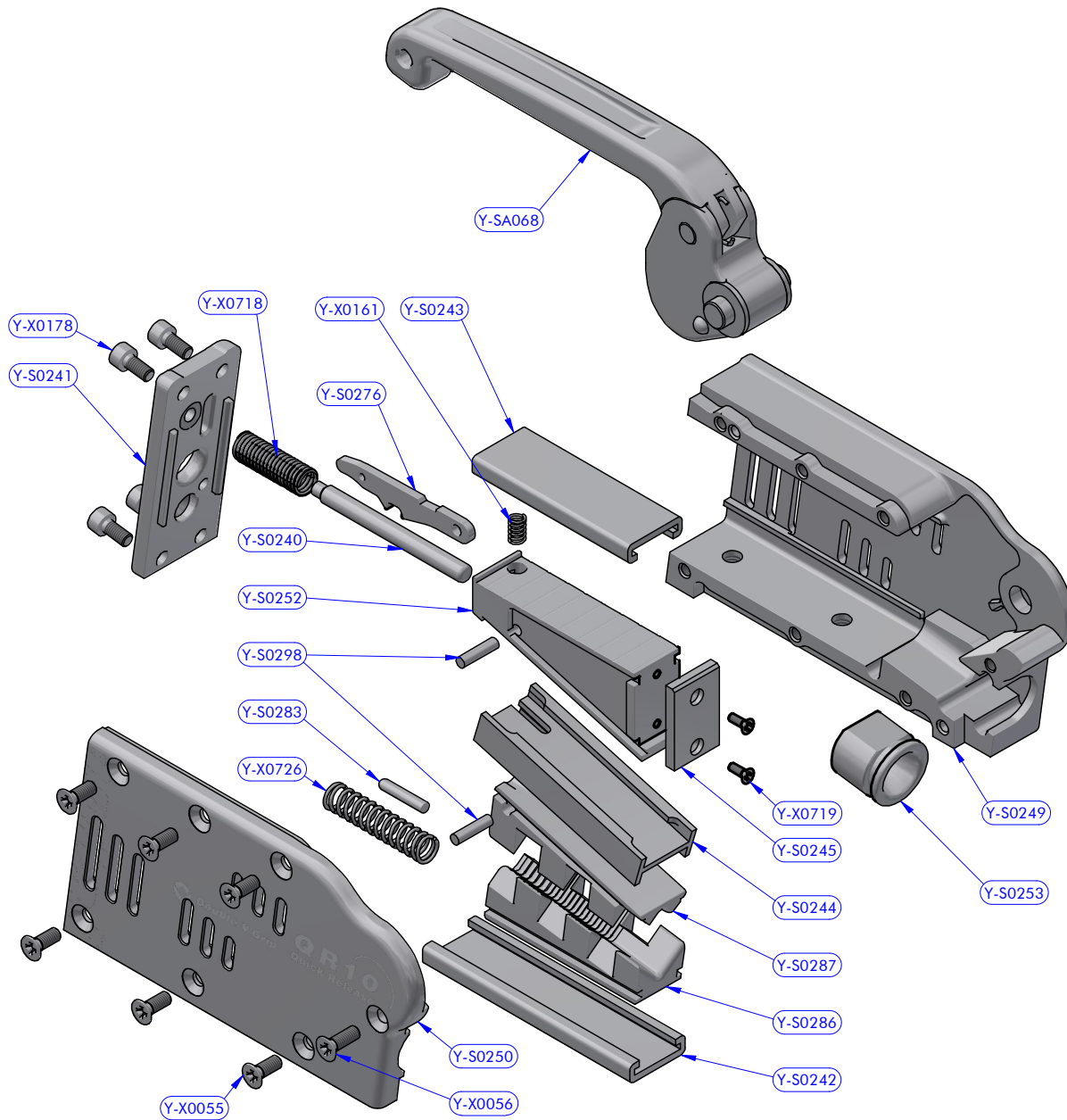


PART LIST			
CODE	DESCRIPTION	MATERIAL	Q.TY
Y-SA027	Base mounting kit	Various	1
Y-SA031	Common part assy		1



Cod.Y-SA031  
Common part assy QR10

PART LIST - Y-SA031			
CODE	DESCRIPTION	MATERIAL	Q.TY
Y-S0240	Pin	S.Steel	1
Y-S0241	Rear cover	Aluminium	1
Y-S0242	Guide	Polietilene	1
Y-S0243	Guide	Polietilene	1
Y-S0244	Insert	Polietilene	1
Y-S0245		Composite fibre	1
Y-S0249	Body	Aluminium	1
Y-S0250	Cheekplate	Aluminium	1
Y-S0252	Wedge	Aluminium	1
Y-S0253	Ring	Aluminium	1
Y-S0276	Command lever	S.Steel	1
Y-S0283	Free line mark	Aluminium	1
Y-S0286	Lower jaw	Aluminium	1
Y-S0287	Upper jaw	Aluminium	1
Y-S0298	Cylinder pin	S.Steel	2
Y-SA068	Lever assy	Various	1
Y-X0055	Screw	S.Steel	6
Y-X0056	Screw	S.Steel	1
Y-X0178	Screw	S.Steel	4
Y-X0718	Compression spring	S.Steel	1
Y-X0719	Screw	S.Steel	2
Y-X0726	Compression spring	S.Steel	1
Y-X0161	Compression spring	S.Steel	1



QR10 clutch with base

506.106

01/02/2019

DATE REV.

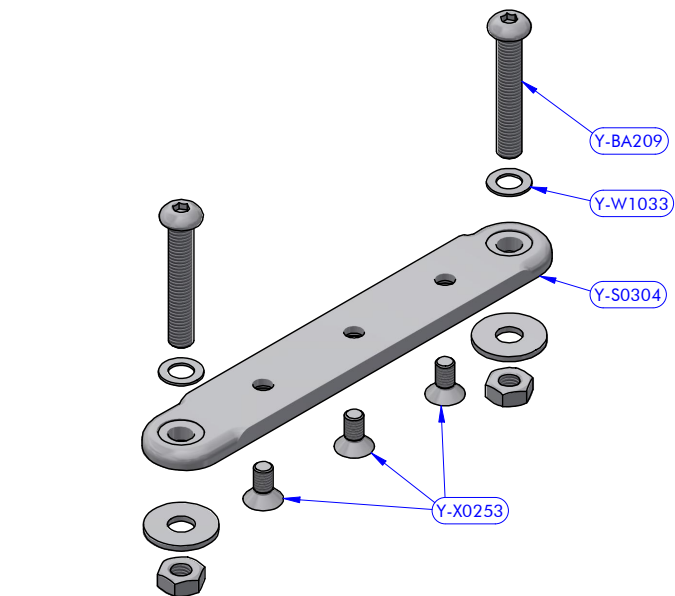
18050204

DWG N. PG.

2 / 3

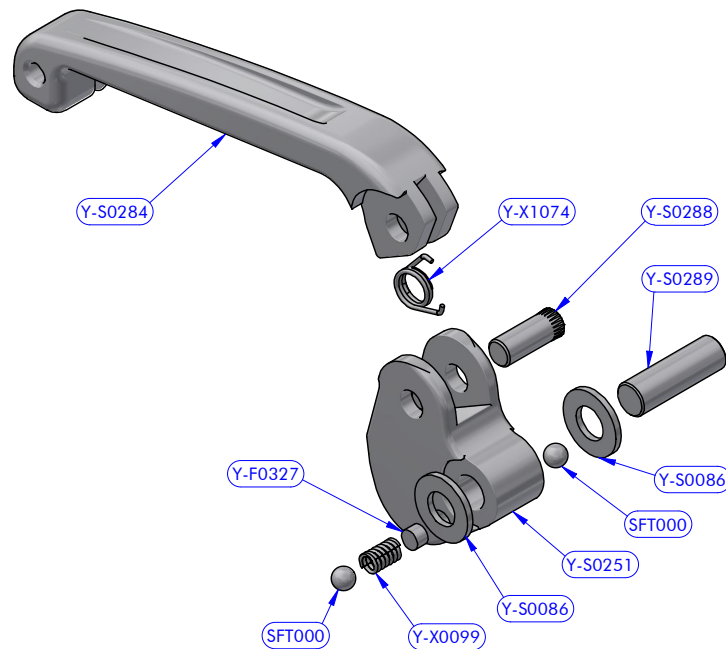
DESCRIPTION

MODEL CODE



Cod.Y-SA027  
Base Upper mounting kit QR10

PART LIST - Y-SA027			
CODE	DESCRIPTION	MATERIAL	Q.TY
Y-BA209	Fixing screw kit	S.Steel	2
Y-S0304	Base	Aluminium	1
Y-W1033	S.Steel washer	S.Steel	2
Y-X0253	Screw	S.Steel	3



Cod.Y-SA068  
Lever assy QR10

PART LIST - Y-SA068			
CODE	DESCRIPTION	MATERIAL	Q.TY
SFT000	Torlon ball	Torlon	2
Y-F0327	Cylinder pin	Teflon	1
Y-S0086	Resin washer	POM-C	2
Y-S0251	Cam	Aluminium	1
Y-S0284	Lever	Aluminium	1
Y-S0288	Cylinder pin	S.Steel	1
Y-S0289	Cylinder pin	S.Steel	1
Y-X0099	Compression spring	S.Steel	1
Y-X1074	Torsion spring	S.Steel	1

**antal**

QR10 clutch with base

**506.106**

01/02/2019

DATE

REV.

18050204

DWG N.

3 / 3

PG.

DESCRIPTION

MODEL CODE